



TYPICAL

GC 6925 SERIES

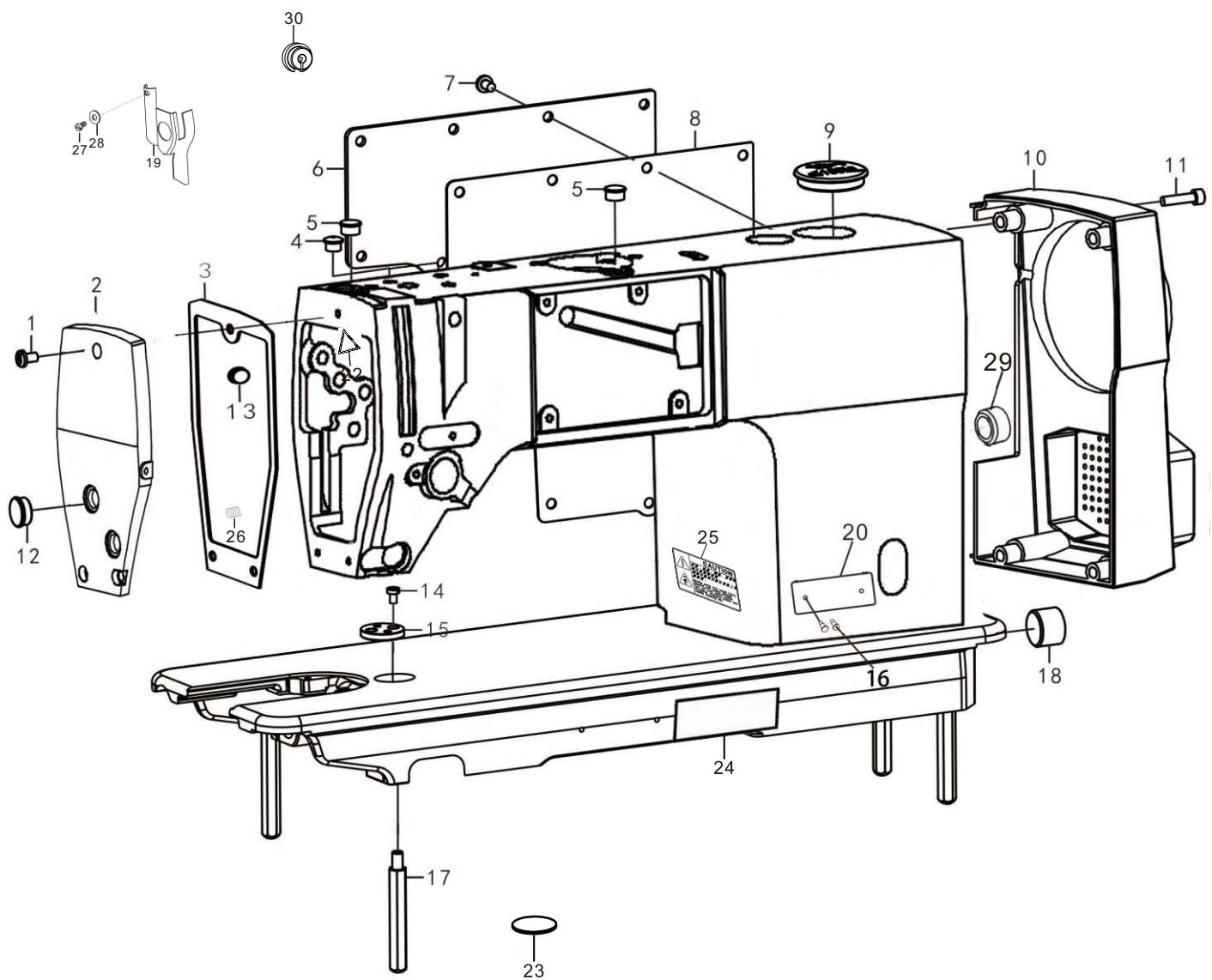
COMPUTER-CONTROLLED CYCLE MACHINE
WITH INPUT FUNCTION

INSTRUCTION BOOK
PARTS CATALOGUE

目 录 CATALOG

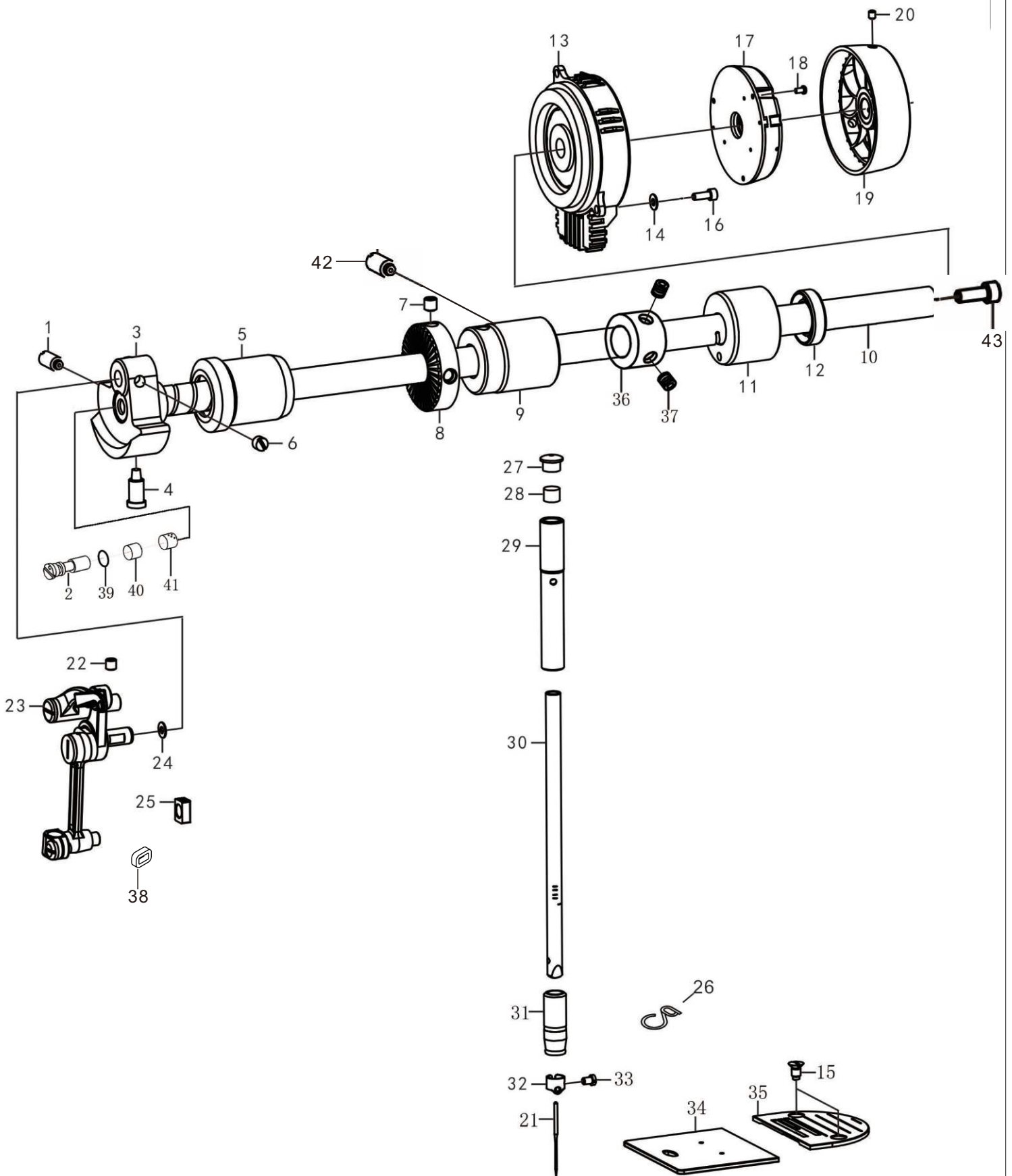
1. 机体部分/Machine body	1
2. 针杆和挑线杆装置/Needle bar and thread take-up mechanism	3
3. 压脚装置/Presser foot mechanism	7
4. 送料装置/Feed mechanism components	9
5. 旋梭装置/Hook components	13
6. 供油润滑装置/Lubrication	15
7. 穿线装置/Threading mechanism	17
8. 切线装置/Thread trimmer mechanism	19
9. 倒缝开关装置/Quick reverse switch mechanism	21
10. 控制箱装置和操作盒/Control box device and operation box	21
11. 附件/Accessories	23

1. 机体部分/Machine body



序号	物料编码	用量	零件名称	NAME OF PARTS
1	S094762809	3	螺钉	SCREW
2	692501001	1	面板	FACE PLATE
3	288C01002	1	面板垫	GASKET
4	991001005	2	橡皮塞	RUBBER CAP 8.5
5	991001006	2	橡皮塞	RUBBER CAP 12.2
6	288001006	1	后窗板	SIDE PLATE
7	S094762809	9	螺钉	SCREW
8	288001008	1	后窗板衬垫	GASKET
9	380012201	1	橡皮塞 37.8	RUBBER CAP 37.8
10	692501010	1	电机罩	MOTOR COVER
11	M180500820	4	螺钉 M5×20	SCREW M5×20
12	991001033	5	橡皮塞12.8	RUBBER CAP 15.5
13	280001065	1	电子松线器过线橡胶塞	RUBBER CAP
14	S074374006Z	1	螺钉 SM4.37X40-6	SCREW SM4.37X40-6
15	280001037	1	卷边器座	EDGE WINDING DEVICE
16	991001039	2	铆钉	RIVET
17	280001036	4	底板支柱	BED SCREW STUD
18	288001018	1	下轴盲孔塞	RUBBER CAP 21
19	280001004	1	面部防油板	Arm oil shield plate gasket
20	692501020	1	型号牌	MODEL CARD
21	288001021	1	机壳组件	Machine cover
22	280001070	1	安全标示	SAFETY MARKING
23	288001023	1	检验标示	INSPECTION SIGN
24	280001071	1	机器翻倒说明	MACHINE OVERTURN INSTRUCTIONS
25	991001012	1	安全指示牌	SAFETY IABLE
26	S154374006	1	螺钉	SCREW
27	S073184404	1	螺钉	SCREW
28	991001057	1	垫片	Grease plate gasket
29	288004041	1	油封	Oil seal
30	280001063	1	操作面板出线橡胶塞	Rubber plug

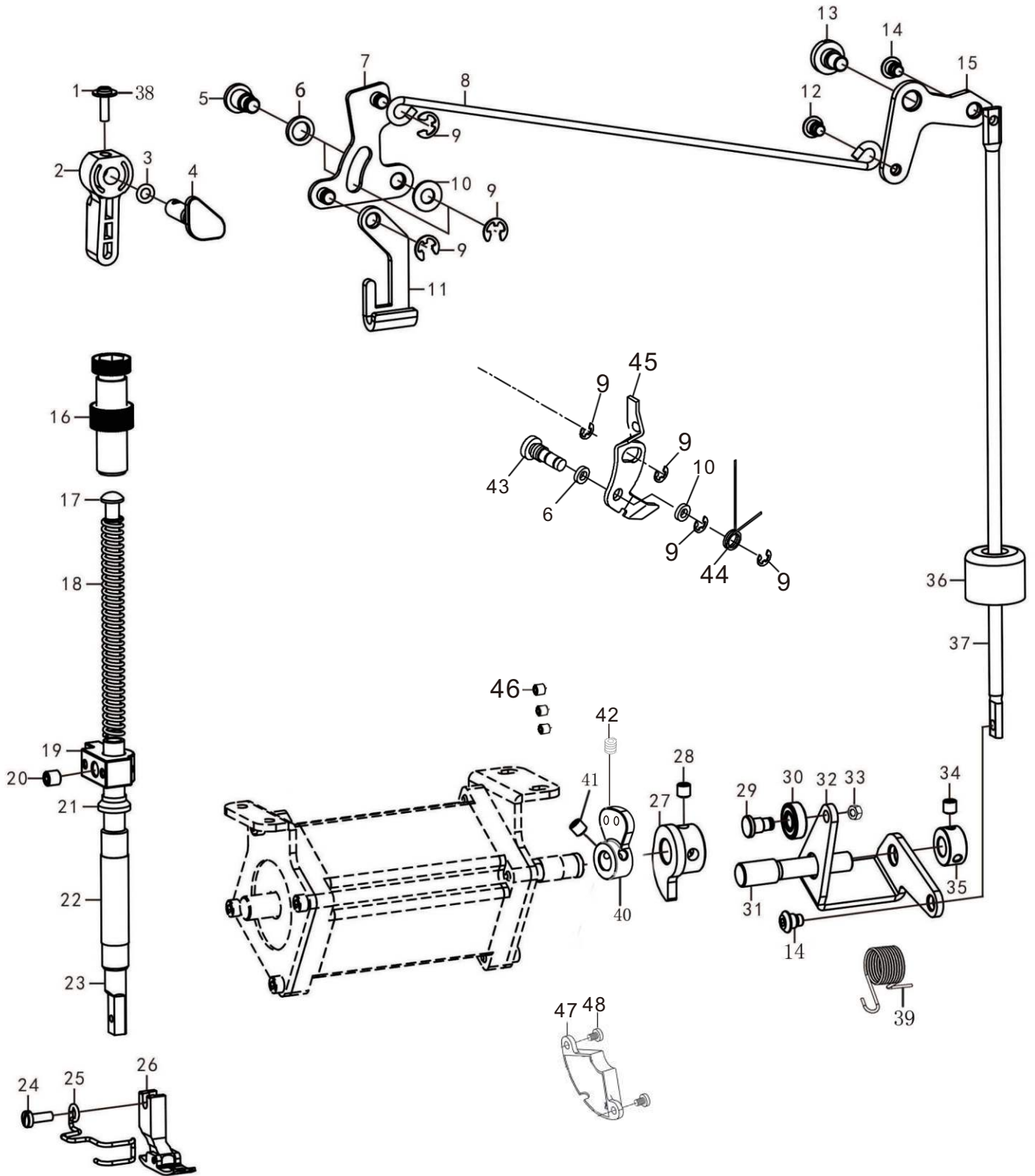
2. 针杆和挑线杆装置/Needle bar and thread take-up mechanism



序号	物料编码	用量	零件名称	NAME OF PARTS
1	S127142816	1	螺钉 SM7. 14×28-16	SCREW SM7. 14×28-16
2	991002024	1	油量调节销	RUBBER CAP
3	991002009-5	1	针杆曲柄	COUNTER WEIGHT
4	S077142815	1	螺钉 SM7. 14×28-15.5	SCREW SM7. 14×28-15.5
5	991002017	1	上轴前轴套	MAIN SHAFT BUSHING FRONT
6	S126354006	2	螺钉 SM6. 35×40-6	SCREW SM6. 35×40-6
7	S144374006	2	螺钉	SCREW
8	991009016	1	绕线驱动轮	BOBBIN WINDER DRIVING WHEEL
9	991002018	1	上轴中轴套	BUSHING INTERMSDIATE
10	288002010	1	上轴	MAIN SHAFT
11	991002012	1	上轴后轴套	MAIN SHAFT BUSHING REAR
12	991002013	1	油封	OIL SEAL
13	380022101	1	电机组件	SERVO MOTOR ASSY
14	280002014	3	弹性垫圈	SPRING WASHER
15	S044374006Z	3	螺钉SM4. 37X40-6	SCREW SM4. 37X40-6
16	M180500814	3	螺钉 M5×14	SCREW M5×14
17	380022301	1	编码器	FILM ROTATING AND ENCODER ASSY
18	M070300505	3	螺钉M3×5	SCREW M3×5
19	692502019	1	手轮	HANG WHEEL ASM
20	M140500806	2	螺钉	SCREW M5×10
21	991014011	1	机针DBX1 14	NEEDLE DPX1 14
	991003011H-5	1	机针 DPX5 20	NEEDLE DPX5 20
22	991002001	1	螺钉 SM5.95X28-10.5	SCREW SM5.95X28-10.5
23	991002004	1	挑线杆组件 M	THREAD TAKE-UP LEVER ASM M
	991002004H	1	挑线杆组件 H	THREAD TAKE-UP LEVER ASM H
24	W220801605	1	垫圈	WASHER
25	280002004	1	针杆连接柱滑块	SLIDE BLOCK
26	991003007	1	针杆下套线勾	NEEDLE BAR THREAD GUIDE
27	991003001	1	针杆上套孔塞	RUBBER CAP 8.5
28	280003036	1	油毡	FELT
29	991003002	1	针杆上套	NEEDLE BAR BUSH U
30	991003003	1	针杆 M	NEEDLE BAR M
	991003003H	1	针杆 H	NEEDLE BAR H
	991003008	1	针杆下套 M	NEEDLE BAR BUSH D M
31	991003008H	1	针杆下套 H	NEEDLE BAR BUSH D H
	991003010	1	针杆过线环M	NEEDLE BAR THREAD GUIDE M
32	991003010H	1	针杆过线环H	NEEDLE BAR THREAD GUIDE H

序号	物料编码	用量	零件名称	NAME OF PARTS
33	S083184405	1	支针螺钉SM3.18	SCREW SM3.18
34	991001035	1	推板组件	SLIDE PLATE COMPONENTS
35	991001028	1	针板 M	THREAD PLATE M
	991001028H	1	针板 H	THREAD PLATE H
36	991002015	1	上轴挡圈	THRUST COLLAR ASM
37	S116354006	2	螺钉	SCREW
38	991002019	1	挑线杆橡胶套	Rubber
39	991002025	1	上轴油量调节销0型圈	Rubber ring
40	870002013	1	油量销套	Oil throttle
41	280003036	1	曲柄油量限制毡	Roller felt
42	S145952806	1	上轴中轴套螺钉	Screw
43	S078732811	1	螺钉	Screw

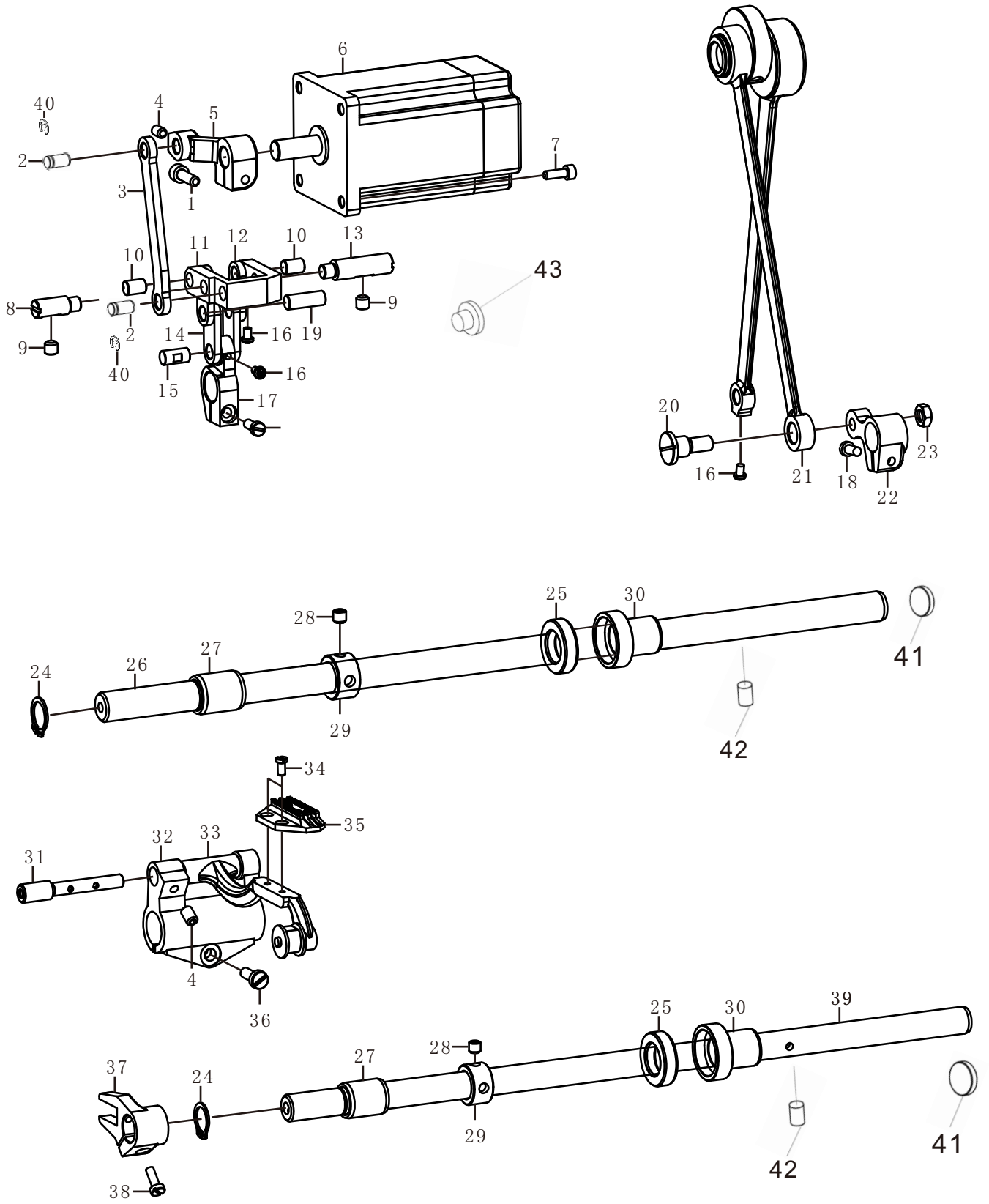
3. 压脚装置/Presser foot mechanism



序号	物料编码	用量	零件名称	NAME OF PARTS
1	991004002	1	螺钉 SM3.57×40-9.5	SCREW SM3.57×40-9.5
2	692504001	1	抬压脚扳手	HAND LIFTER
3	991004003	1	O型圈 P4	RING P4
4	LB1112	1	抬压脚凸轮	PRESS FOOT LIFTER CAM ASM
5	991004007	2	前杠杆螺纹销	LINK SHAFT
6	991004039-1	2	红纸垫	WASHER
7	280004019-1	1	抬压脚前杠杆	HANK LIFTER LINK
8	288003008	1	抬压脚拉杆	LIFTING LEVER LINK
9	991004008	3	卡簧 E5	SNAP RING E5
10	991002036	1	垫圈	WASHER
11	991004032-2	1	压脚升降板	LIFTING LEVER
12	991004010	3	轴位螺钉 SM4.76	SCREW SM4.76
13	288003013	1	轴位螺钉 SM6.35	SCREW SM6.35
14	288003014G	2	轴位螺钉	SCREW
15	288003015	1	抬压脚后杠杆	LIFT KNEE CONTROL LEVER
16	692504028A	1	调压螺钉组件M	PRESSURE REGULATING BOLT ASSY M
17	991004033	1	调压导杆	PRESSER GUIDE BAR
	991004029	1	调压簧M	PRESSER SPRING M
18	991004029H		调压簧H	PRESSER SPRING H
19	280004006	1	压杆导架	NEEDLE BAR GUIDE BRACKET
20	S126354006	1	螺钉 SM6.35×40-6	SCREW SM6.35×40-6
21	991004041	1	压杆下套防油圈	SHOCK PAD
22	991004005	1	压杆轴套	PRESSER BAR
23	991004031	1	压杆	PRESSER BAR BUSHING LOWER
24	S073574011	1	螺钉 SM3.57×40-11	SCREW
25	991004036	1	护指器	PROTECT SHELF
	991004009	1	压脚 M	MPRESSER FOOT ASM M
26	991004009H	1	压脚 H	MPRESSER FOOT ASM H
27	288003027	1	抬压脚凸轮	HAND LIFTER CAM
28	M140607508	2	螺钉 M6×0.75-8	SCREW M6×0.75-8
29	288003029	1	轴位螺钉	SCREW M6×0.75-16
30	288003030	1	压脚扳手滚珠	BEARING
31	288003031	1	抬压脚曲柄轴	PRESSER FOOT CRANK SHAFT
32	288003032	1	抬压脚驱动曲柄	PRESSER FOOT DRIVING CRANK
33	N210607503	1	螺母 M6×0.75	NUT M6×0.75
34	S074374005	2	螺钉 SM4.37X40-5	SCREW SM4.37X40-5
35	991003020	1	紧圈	SET SCREW COLLAR
36	288003036	1	膝控提升杆橡皮塞	RUBBER CAP
37	288003037	1	抬压脚顶杆	CONNECTING ROD VERTICAL
38	991004042	1	垫片	SHIM
39	288003039	1	压脚复位簧	TORSION SPRING
40	288003040	1	感应器	A SERSOR
41	M140500808	2	螺钉	SCREW

序号	物料编码	用量	零件名称	NAME OF PARTS
42	M140300503	1	螺钉	SCREW
43	991004026	1	松线顶板螺纹销	Link shaft
44	991004022	1	松线顶板复位簧	Tension release return spring
44	991004022H	1	松线顶板复位簧(厚料)	Tension release return spring
45	280004017		松线顶板	Thread tension release wire
46	280003046	3	磁铁	Magnet
47	380110901-2	1	编码器	Encoder
48	M070300505	2	螺丝	SCREW

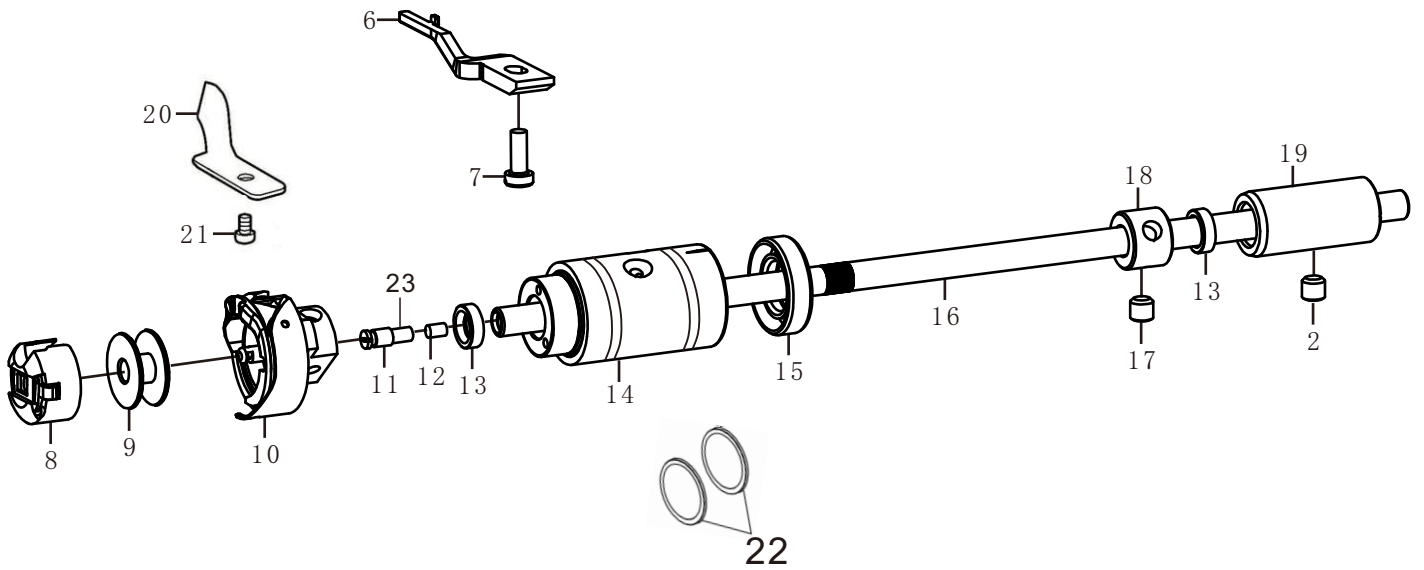
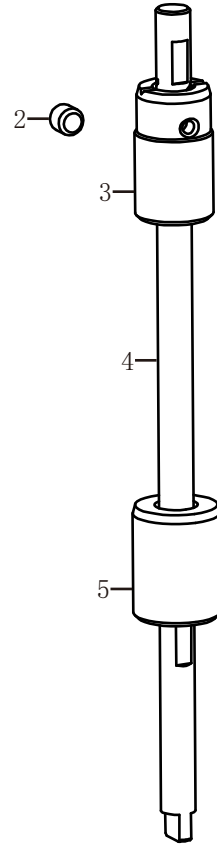
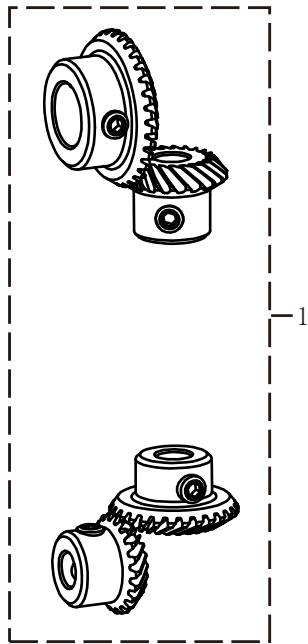
4. 送料装置/Feed mechanism components



序号	物料编码	用量	零件名称	NAME OF PARTS
1	M180500816	1	螺钉 M5×16	SCREW M5×16
2	288004002	2	连杆轴	STUD
3	288004003	1	倒缝连杆	F-REGULATOR CONNECT ROD
4	S14374006	2	螺钉 SM4. 37×40-6	SCREW SM4. 37×40-6
5	288004005	1	倒缝曲柄	INVERTED CRANK
6	288004006	1	倒缝步进电机	BACKSEWING STEPPING MOTOR
7	M180400714	4	螺钉 M4×14	SCREW M4×14
8	991005026	1	摆动板座右销	ADJUSTING LINK FULCRUM SHAFT
9	991002001	2	螺钉 SM5. 95×28-8	SCREW SM5. 95×28-8
10	280004010	2	短摆动板连接销	FEED LINK STUD
11	288004011	1	摆动座	LEVEL FEED REGULATOR
12	280004012	2	短摆动板	FEED ROCKER LINK
13	288004013	1	摆动座右销	ADJUSTING LINK FULCRUM SHAFT
14	280004014	2	长摆动板	FEED ROCKER ARM LINK
15	991005038	1	送料曲柄销	WALKING FOOT PIN
16	S073574005	5	螺钉 SM3. 57×40-5	SCREW SM3. 57×40-5
17	991005041	1	送布曲柄	FEED ROCKER SHAFT CRANK
18	S074762815	2	螺钉	SCREW
19	991005013	1	送料连杆销	WALKING FOOT PIN
20	991005045	1	抬牙连杆轴位螺钉	HINGE SCREW
21	288004021M	1	连杆组件 M	CONNECTING ROD ASM M
	991005067H	1	连杆组件 H	CONNECTING ROD ASM H
22	991005043	1	抬牙后曲柄	REAR CRANK ASM
23	N217142805	1	螺母 SM5. 95	NUT SM5. 95
24	991005051	2	抬牙轴用挡圈 C14	RING C14
25	280005062	2	送布、抬牙中套油封	OIL SEAL
26	288004026	1	送布轴	FEED ROCKER SHAFT
27	991005049	2	送布轴前轴套	FEED ROCKER SHAFT METAL
28	S126354004	4	螺钉 SM6. 35×40-4	SCREW
29	991002015	2	送布轴挡圈	THRUST COLLAR
30	280005061	2	送布轴中套	FEED ROCKER SHAFT METAL
31	991005029	1	牙架销	FEED BAR SHAFT
32	991005052	1	牙架座	FEED ROCKER
33	991005033	1	牙架	FEED BAR
34	S073184406	2	螺钉 SM3. 18×44-6	SCREW SM3. 18×44-6
35	991005031	1	送料牙 M	FEED DOG
	991005031H	1	送料牙 H	FEED DOG
36	S074762812	1	螺钉 SM5. 95×28-12	SCREW SM5. 95×28-12

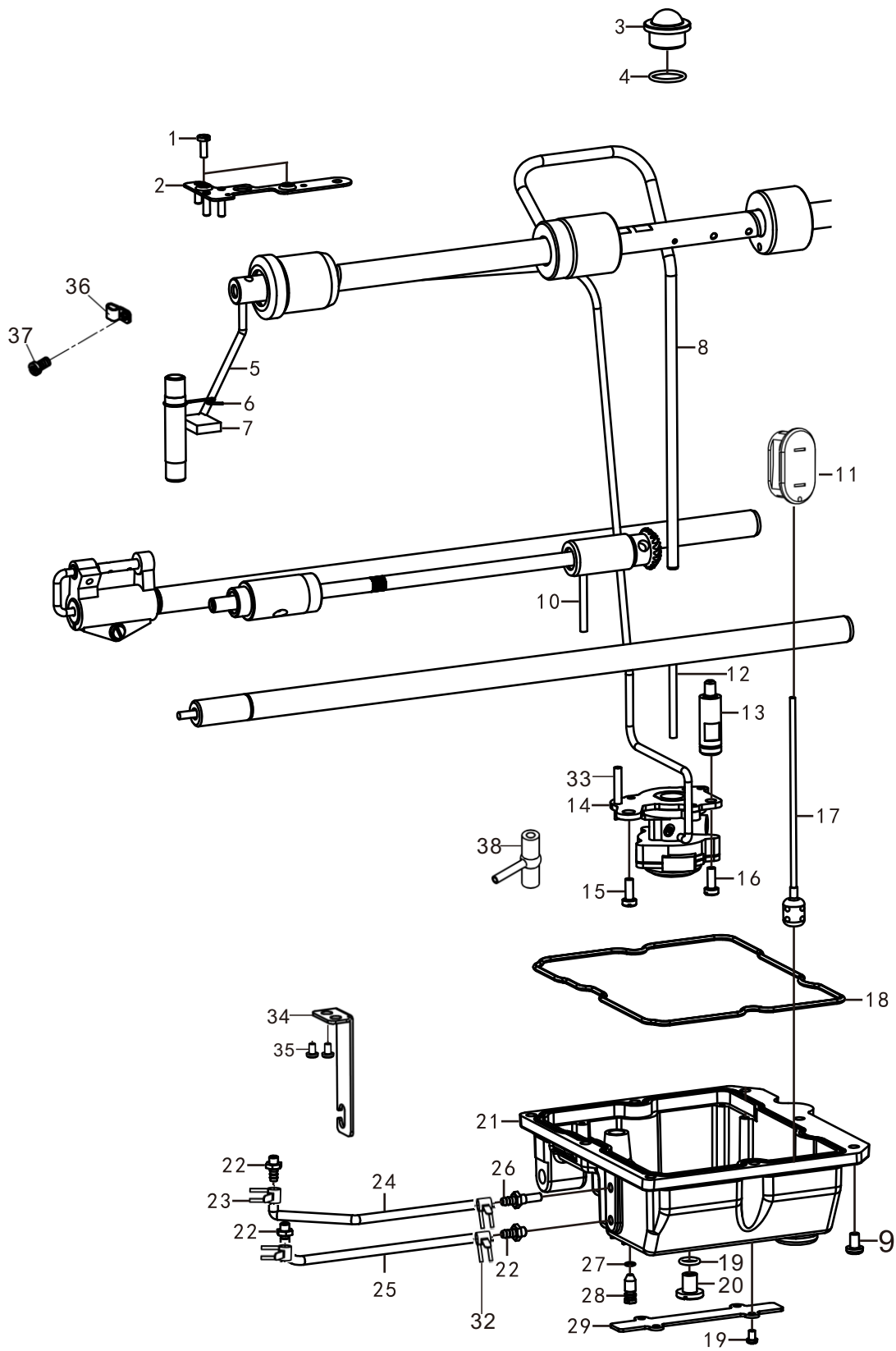
序号	物料编码	用量	零件名称	NAME OF PARTS
37	991005054	1	抬牙叉	DRIVING SHAFT CRANK ASM FRONT
	991005054H	1	抬牙叉 H	DRIVING SHAFT CRANK ASM FRONT H
38	S084374012	1	螺钉	SCREW
39	288004039	1	抬牙轴	FEED DRIVING SHAFT
40	288004040	1	卡簧	REED SPRING
41	288004041	2	橡胶塞	Rubber plug
42	991005064	2	油毡	ASPHALT FELT
43	288001029		橡胶塞	Rubber plug

5. 旋梭装置/Hook components



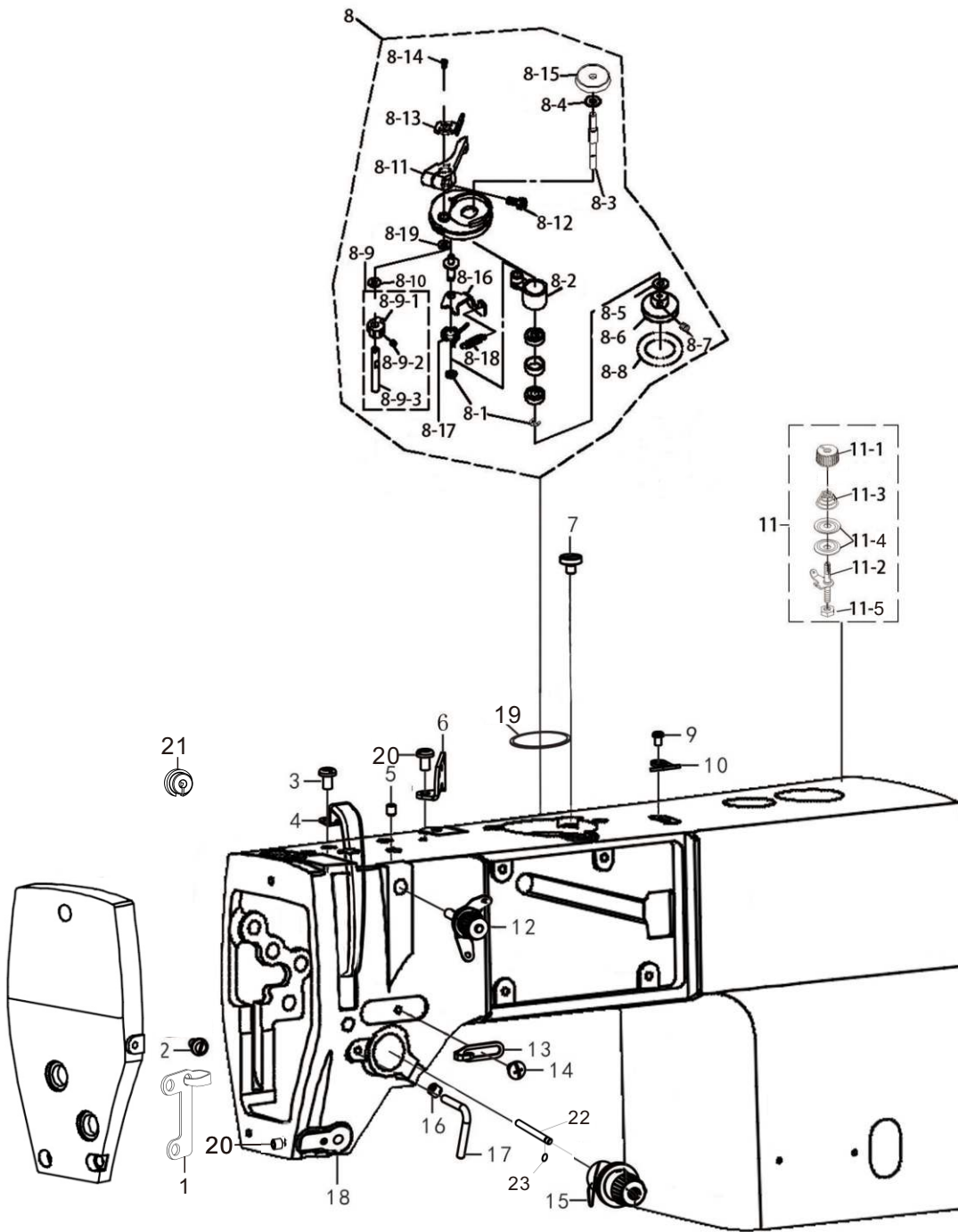
序号	物料编码	用量	零件名称	NAME OF PARTS
1	991003012	1	伞齿轮组件	BEVEL GEAR ASSY
2	S145952804	1	螺钉	SCREW
3	991003016-1	1	竖轴上轴套	VERTICAL SHAFT BUSH U
4	991003014-1	1	竖轴	VERTICAL SHAFT
5	991003018	1	竖轴下轴套	VERTICAL SHAFT BUSH D
6	991003023	1	旋梭定位勾	HOOK STOPPER
7	S084374011	1	螺钉 SM4. 37×40-11	SCREW SM4. 37×40-12
8	991003030	1	梭芯套组件	BOBBIN CASE ASSY
9	991003029	1	梭芯	BOBBIN
10	991003015	1	旋梭组件 M	ROTARY HOOK ASSY M
	991003015H	1	旋梭组件 H	ROTARY HOOK ASSY H
11	991003028	1	油芯螺钉	OIL COVER SCREW
12	LL1122	1	油芯	OIL CORE
13	030306031	2	油封	OIL SEAL
14	280002019	1	下轴前套	PUMP BUSH
15	280003033	1	油封	OIL SEAL
16	991003022	1	下轴	ROTARY HOOK SHAFT
17	S074374005	2	螺钉 SM4. 37×40-5	SCREW SM4. 37×40-5
18	991003020	1	下轴挡圈	SET SCREW COLLAR
19	380072401G	1	下轴后轴套	BUSHING REAL
20	280006040	1	分线片	LOWER THREAD FINGER
21	S073574006	1	螺钉	SCREW
22	280003035	1	O型圈	O-RING
23	991003027	1	下轴限油芯	Oil wick

6. 供油润滑装置/Lubrication



序号	物料编码	用量	零件名称	NAME OF PARTS
1	S093574016	2	螺钉	SCREW
2	991001052	1	油线固定板组件	OIL THREAD BOARD ASM
3	991009001	1	油窗	OIL GAUGE WINDOW
4	991009002	1	O 型圈	O RING
5	991009006	1	油管 L=	VINYL TUBE L=
6	991009005	1	油毡夹	OIL FELT PRESSER
7	991009019	1	回油管垫	FELT
8	991009003	1	上轴供油管	MAIN SHAFT OIL TUBE
9	M180500816	1	螺钉 M5×16	SCREW M5×16
10	991009008	1	油线	WLCK
11	288C06011	1	油量视窗	OIL GAGE WINDOW
12	991009008	1	油线	WLCK
13	991009013	1	油泵支柱	OIL PUPM SUPPORT
14	288009014	1	油泵组件	PUMP UNIT
15	S075952810	1	螺钉 SM5. 95×28-10	SCREW SM5. 95×28-10
16	S074374010	1	螺钉 SM4. 37×40-10	SCREW SM4. 37×40-10
17	288006017	1	浮球组件	FLOAT ASSY
18	288006018	1	油盒密封圈	OIL BOX SEALING RING
19	280010031G	1	O型圈	O Ring
20	380084601	1	放油螺钉	SCREW
21	288006021	1	油盒	OIL BOX
22	280001058	3	回油口	OIL FEEDING PIPE
23	500016011-1	4	油管夹	OIL PIPE CLAMP
24	682506024	1	油管	NINYL TUBELQ
25	682506024	1	油管 L=	VINYL TUBE L=
26	280010028	1	供油口	OIL FEEDING PIPE
27	0000660015	1	O型圈 S4	O RING S4
28	380082101	1	调节螺钉	ADJUESTING SCREW
29	288006029	1	电线压板	WIRE PLATE
30	380084701	1	O型圈 P8	O RING P8
31	380084601	1	放油螺钉 M8	SCREW PAN M8
32	991009007	1	回油管夹	Holder
33	280009012	1	小油管	Rubber joint
34	380082801	1	油管支架	Tubing bracket
35	M070500808	2	螺钉	SCREW
36	991009007	1	回油管夹	Holder
37	S094762806	1	回油管夹螺钉	Screw
38	991009015	1	供油管接头	Rubber joint

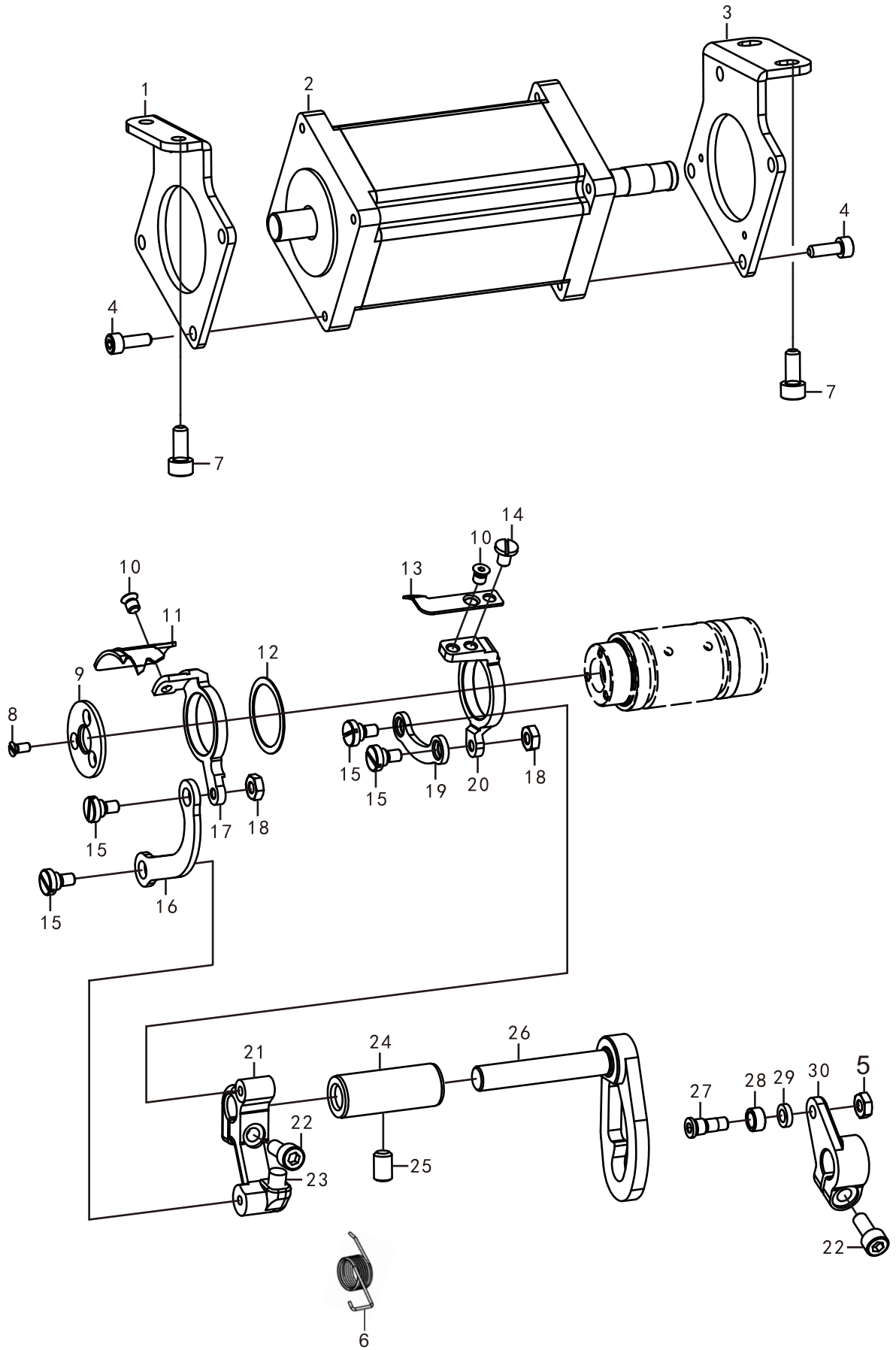
7. 穿线装置/Threading mechanism



序号	物料编码	用量	零件名称	NAME OF PARTS
1	280001031	1	面线线勾	FACE PLATE THREAD GUIDE
2	S074374006	1	螺钉 SM4. 37X40-6	SCREW
3	S094762806	1	螺钉 SM4. 76×28-6	SCREW SM4. 76×28-6
4	991001021	1	挑线杆防护罩	THREAD TAKE-UP LEVER COVER
5	S114374006	1	螺钉	SCREW
6	991001007	1	三眼过线板	SPOOL PLATE
7	M080500810	3	螺钉 M5×10	SCREW M5×10
8	280001041	1	绕线器组件	BOBBIN WINDER ASM
8-1	991001041-1	2	挡圈	RING
8-2	991001041-2	1	绕线器基座	BOBBIN BASE
8-3	991001041-3	1	绕线轴	SPOOL
8-4	991001041-4	1	O型圈	ORING
8-5	991001041-5	1	平垫圈	WASHER
8-6	991001041-6	1	绕线轮	WINDING WHEEL
8-7	991001041-7	2	螺钉M5X5	SCREW
8-8	991001041-8	1	橡皮垫圈	RUBBER WASHER
8-9	991001041-9	1	梭芯夹凸轮组件	SHUTTLE CAM ASM.
8-9-1	991001041-9-1	1	梭芯夹凸轮	SHUTTLE CAM.
8-9-2	991001041-9-2	1	螺钉M5X5	SCREW
8-9-3	991001041-9-3	1	梭芯夹轴	SHUTTLE CLAMP SHAFT
8-10	991001041-11	2	平垫圈	FLAT WASHER
8-11	991001041-12	1	梭芯压臂柄	SHUTTLE ARM HANDLE
8-12	991001041-13	1	螺钉M4X12	SCREW
8-13	991001041-14	1	梭芯夹	BOBBIN CLIP
8-14	991001041-15	2	螺钉SM4. 76	SCREW
8-15	991001041-16	1	梭芯座	BOBBIN BASE
8-16	991001041-17	1	绕线杠杆	WINDING LEVER
8-17	991001041-18	1	弹簧	SPRING
8-18	991001041-19	1	弹簧	SPRING
8-19	991001041-20	1	O型密封圈	O TYPE SEALING RING
9	S093574005	2	螺钉 SM3. 57×40-5	SCREW SM3. 57×40-5
10	991001043	1	割线刀	KNIFE
11	692501045	1	绕线器夹线组件	BOBBIN THREAD TENSION ASM
11-1	991001045-1	1	夹线螺母	TENSION NUT
11-2	991001045-2	1	夹线螺钉	TENSION POST
11-3	991001045-3	1	夹线弹簧	TENSION SPRING
11-4	991001045-4	2	夹线板	THREAD TENSION DISK PRESSER
11-5	991001045-6	1	夹线螺母（下）	TENSION NUT
12	692501019	1	调线夹线器组件	THREAD TENSION ASM
13	991001023	1	右线钩	FRAME THREAD GUIDE R
14	S074374006	1	螺钉 SM43. 7X40-6	SCREW
15	692507015	1	松线器组件线长26cm	THREAD TENSION ASSY

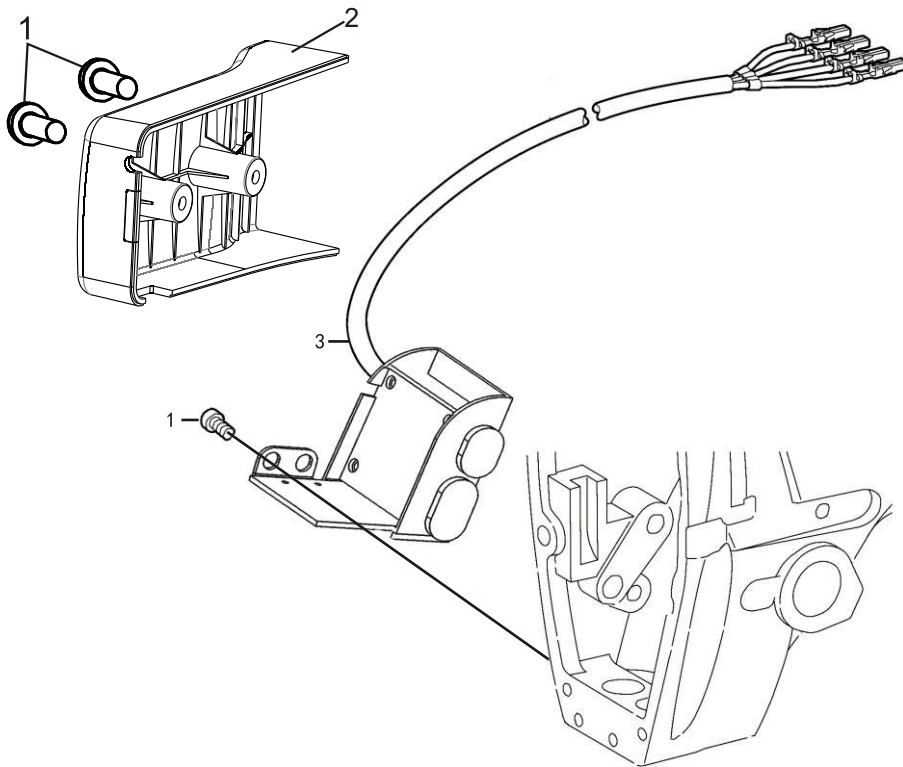
序号	物料编码	用量	零件名称	NAME OF PARTS
16	S115952811	1	螺钉	SCREW
17	280001049	1	大线钩	P-BAR BRACKET THREAD GUIDE
18	288007018	1	电子夹线器线长30cm	THREAD TAKE-UP
19	991001056	1	绕线器垫片	BOBBIN WASHER
20	S074374007	1	螺钉	Screw
21	280001065	1	电子松线器过线橡胶塞	Rubber plug
22	280001027	1	松线钉	Tension releasing
23	991002025	1	O型圈	O-ring

8. 切线装置/Thread trimmer mechanism

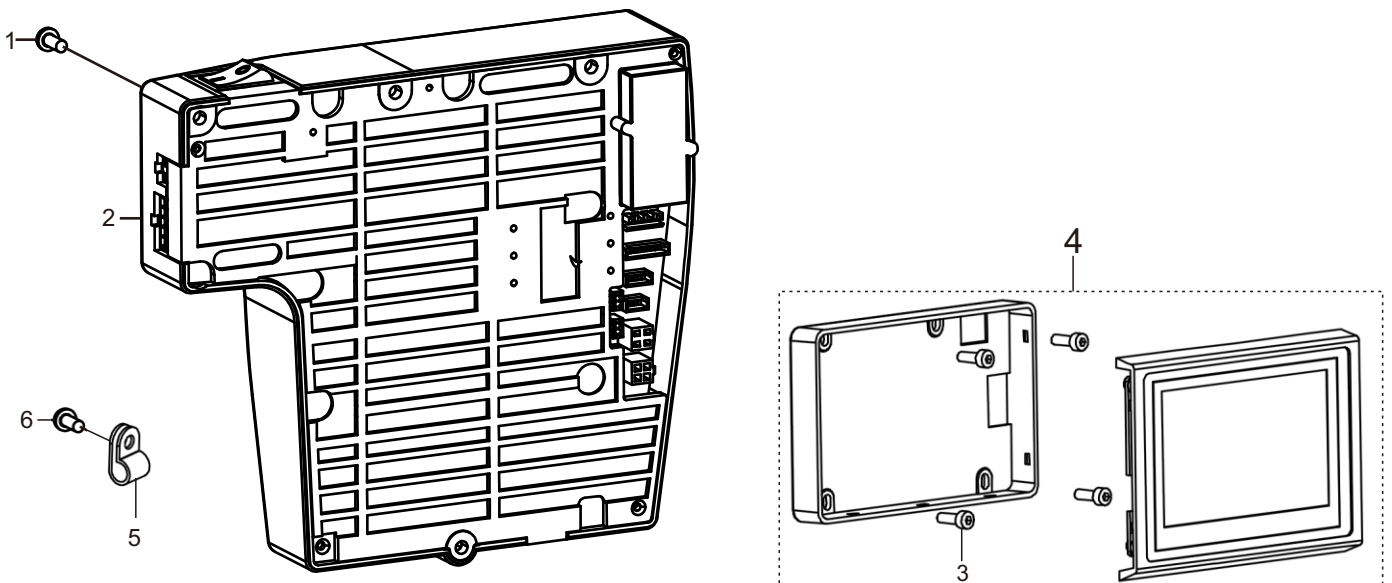


序号	物料编码	用量	零件名称	NAME OF PARTS
1	288008001	1	电机安装板 L	SOLENOID SETTING PLATE L
2	288008002	1	剪线电机	MOTOR
3	288008003	1	电机安装板 R	SOLENOID SETTING PLATE R
4	M180400710	8	螺钉 M4×10	SCREW M4×10
5	288008031	1	螺母 SM4. 37	NUT SM4. 37
6	Lu1255	1	弹簧	SPRING
7	M180500812	4	螺钉 M5×12	SCREW M5×12
8	M040300507	3	螺钉 M3×7	SCREW M3×7
9	280006007	1	动刀压板	KNIFE HOLDER PRESSER PLATE
10	S047374005	3	螺钉 SM4. 37	SCREW SM4. 37
11	280006002	1	下动刀	MOVABLE KNIFEL
12	280006045	1	垫圈	WASHER
13	280006044	1	上动刀	MOVABLE KNIFEL
14	S074374005	1	螺钉 SM4. 37×40-5	SCREW
15	280006011	4	轴位螺钉 M4	SCREW M4
16	280006010	1	刀架长连杆	KNIFE HOLDER CONNECTING ROD L
17	280006001	1	下刀架	KNIFE HOLDER D
18	N210400703	2	螺母 M4	NUT M4
19	280006009	1	刀架短连杆	KNIFE HOLDER CONNECTING ROD S
20	280006004	1	上刀架	KNIFE HOLDER U
21	280006012	1	切线曲柄	THREAD TRIMMER LEVER
22	M180500814	2	螺钉 M5×14	SCREW M5×14
23	280006014	1	驱动曲柄止动块	POSITIONING BLOCK
24	280006017	1	叉轴轴套	FORKED SHAFT BUSH
25	S145952806	1	螺钉 SM5. 95×28-6	SCREW SM5.95X28-6
26	288008026	1	切线曲柄	THREAD TRIMMER LEVER
27	288008027	1	滚轮轴 C	ROLLER SHAFT C
28	288008028	1	滚轮	ROLLER
29	288008029	1	垫圈	WASHER
30	288008030	1	切线驱动曲柄	THREAD TRIMMER CAM LEVER SHAFT

9. 倒缝开关装置/Quick reverse switch mechanism



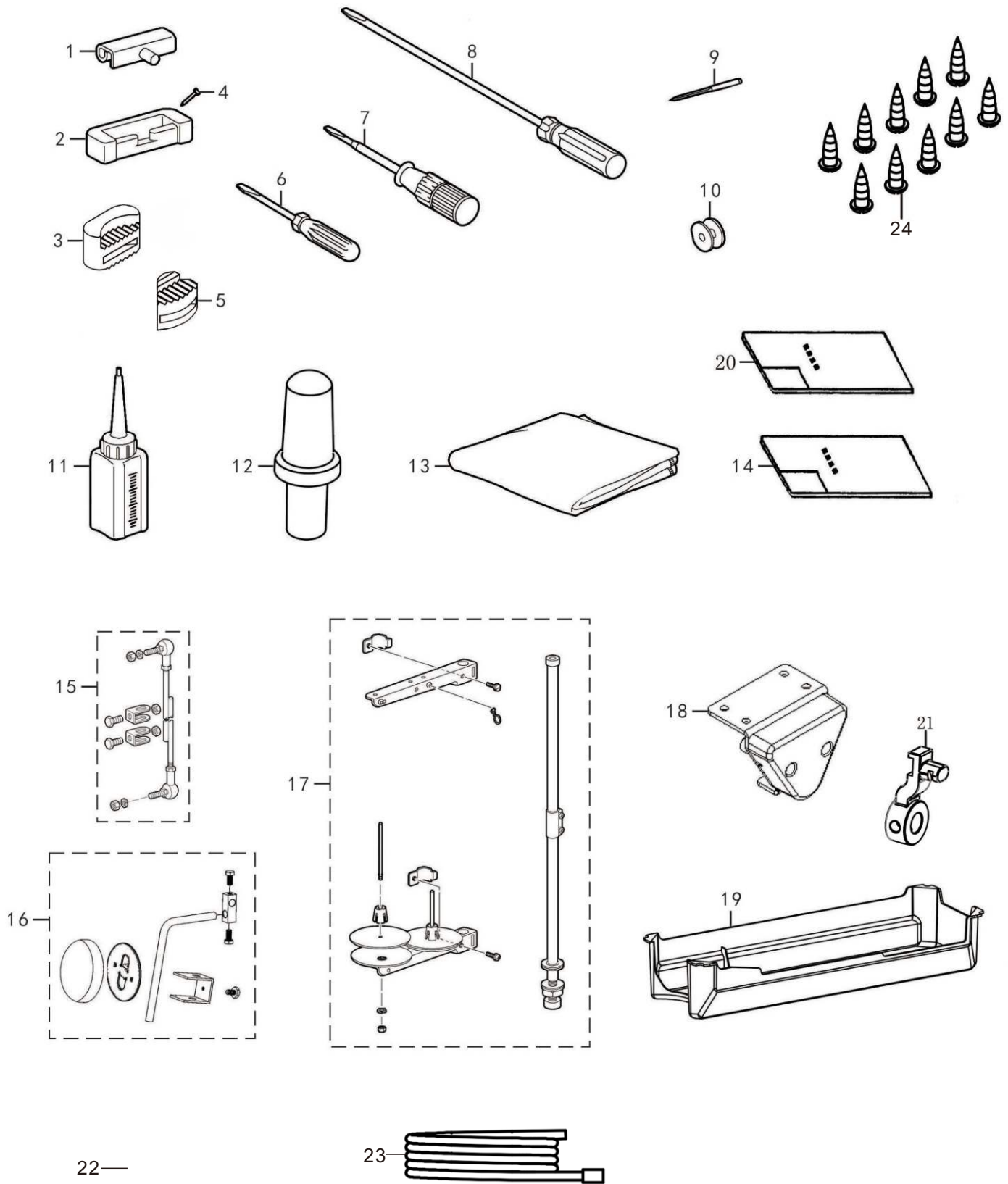
10. 控制部分/Control components



序号	物料编码	用量	零件名称	NAME OF PARTS
1	S094762806	4	螺钉 SM4. 76X28-6	SCREW
2	288009004	1	电线罩壳	LINE BOX
3	692509003	1	倒缝开关组件线长24cm	R-SWITCH ASSY

序号	物料编码	用量	零件名称	NAME OF PARTS
1	S074762820	3	螺钉 SM4. 76X28-20	SCREW SM4. 76X28-20
2	692510002	1	电控组件	CONTROL BOX ASSY
3	S073574008	2	螺钉 SM3.57X40-8	SCREW
4	692510004	1	控制面板	OPERATION PANEL
5	991001061	1	塑料线夹	CORD HOLDER
6	S074762809	1	螺钉	SCREW

11. 附件/Accessories



序号	物料编码	用量	零件名称	NAME OF PARTS
1	991014001	2	机头铰链	MACHINE HINGE PLATE
2	991014003	2	机头铰链套	HINGE SLEEVE HEAD
3	280014012	2	防震垫(A)	QUAKEPROOF WASHER
4	991014002	4	钉	NAIL
5	280014013	2	防震垫(B)	QUAKEPROOF WASHER
6	991014006	1	螺丝刀 (小)	SCREW DIRVER
7	991014005	1	螺丝刀 (中)	SCREW DIRVER
8	991014004	1	螺丝刀 (大)	SCREW DIRVER
9	991014011	4	机针 DB×1 (#14)	NEEDLE DB×1 (#14)
9	991003011H-5	4	机针 DP×5 (#20)	NEEDLE DP×5 (#18)
10	991014007	3	梭芯	BOBBIN
11	991014010	1	中号油壶	OIL RESERIVIR
12	288011012	1	机头撑杆	HEAD REST
13	991014008	1	机头罩	HEAD COVER
14	692511014	1	零件手册	PARTS BOOK
15	991014019	1	拉杆组件	CONNECTING ROD ASSY
16	991010015	1	膝控组件	KNEE LIFTER ASSY
17	991013001	1	线架组件 2DR	THREAD STAND ASM 2DR
18	380060101A	1	电子膝靠组件	ELECTRONIC KNEE CONTROL ASSY
19	280015019	1	托盘	OIL PAN
20	692511022	1	电控说明	ELECTRONIC CONTROL DESCRIPTION
21	380060601	1	膝控摆杆	KNEE CONTROL PENDULUM ROD
22	900000003	1	控速器	Accuser
23	900000001	1	电源线	Power cord
24	10199336	24	自攻螺丝	Screw

- Besides adjusting stitch, please laypeople don't debug or maintain.
 - Parts are subject to changes in design without prior notice.
-